

MAXIMIZE THE
BUSINESS VALUE
OF SOFTWARE

Borland Developer Studio 2006

Borland®

Delphi 2006 – “All in One”

❖ Delphi

❖ *VCL, Win32, IntraWeb*

❖ C++Builder

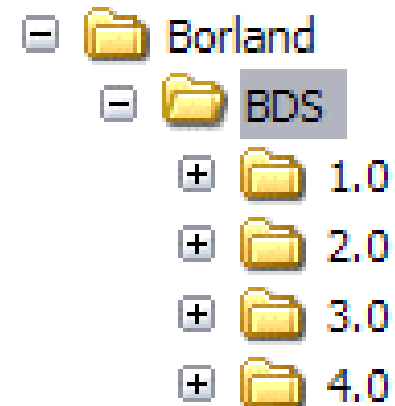
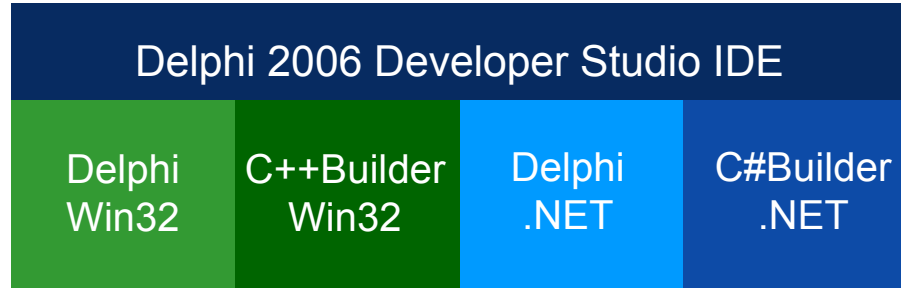
❖ *VCL, Win32, IntraWeb*

❖ Delphi for .NET

❖ *VCL.NET, Winforms, ASP.NET
WebForms, ECO*

❖ C#Builder for .NET

❖ *Winforms, WebForms, ASP.NET, ECO*



Delphi 2006 Mission

- High quality and performance
 - *Radically increase quality, performance, and responsiveness*
- High Productivity of Model Driven Development to the Masses
 - *State Machine design and execution and ECO features in all SKUs*
- More Developer Productivity
 - *VCL Design Guidelines, Together, Live Templates, Many more refactorings*
- Provide C++Builder developers with Borland Developer Studio 2006
 - *Re-integrate/introduce VCL based C++Builder*

Delphi 2006 Responses

- High quality and performance
“the overall stability impressions are very good ” software.gurock
- High Productivity of Model Driven Development to the Masses
“...compelling for serious design...” DevSource
- More Developer Productivity
“...the best RAD tool for Windows ” Tim Anderson, UK, The Register
- Provide C++Builder developers with Borland Developer Studio 2006
“C++Builder is back ” Reg Developer

Update 2 Info

- ❖ More than 500 bug fixes in English version
- ❖ Japanese version signed off this morning
 - More than 200 Japanese localized fixes in addition to the 500 English ones
 - Should be available for download early next week

MAXIMIZE THE
BUSINESS VALUE
OF SOFTWARE

Enterprise Core Objects (ECO)

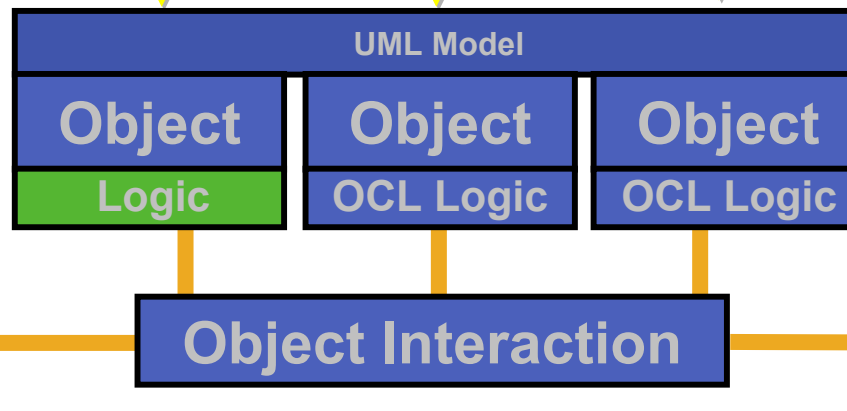
Borland[®]

Design Driven Software Development

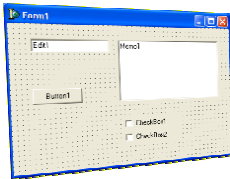
Modeling Design Environment



Model Driven Runtime Framework



UI Designers



1.  Modeled by Architect
2.  Generated From Model
3.  Additional Developer Code as needed

Why?

1. Productivity

- Leverage Model to automate services
 - Persistence, UI, State Machines, Derived Attributes, ...
- Work at a higher-level of abstraction
- Focus more on business-logic, less on plumbing

2. Agility

- Changes in model flow through to other areas

3. Familiarity

- It is still Delphi/C# code

Bold Steps to ECO

BOLD

ECO I

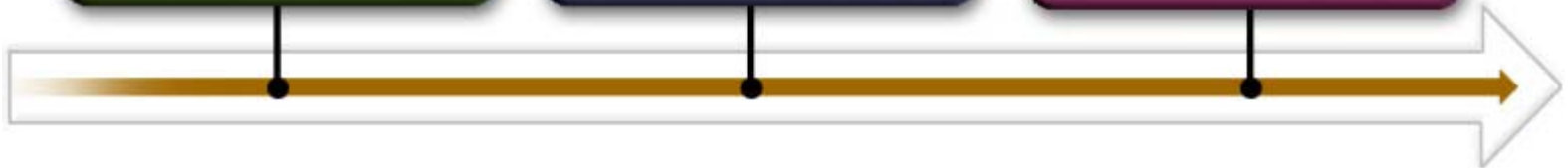
- Create Db schema
- Evolve Db Schema
- Object persistence
- .NET Databinding
- UML Designer
- OCL Editor
- Autoforms

ECO II

- ASP.NET support (Incl. Autoforms)
- WebServices
- Reverse engineer existing Db
- ECO Space Synchronization

ECO III

- State Machine
- Multiple Db support
- ECO Action Language
- Etc.



ECO on the map

❖ ECO

- Enterprise Application Framework
- Raising the level through model focus
- Increasing architects and developers productivity when designing, developing and maintaining enterprise applications

- ECO I C#Builder and Delphi 8 Architect
- ECO II Delphi 2005 Architect
- ECO III Delphi 2006 Professional, Enterprise and Architect



"The Gold Nugget of Delphi 2005"
-- *D2005 Review, Builder.au*

BUILDER • AU
by developers for developers



"The use of ECO in .Net combines enterprise class frameworks and design driven development, which results in significant productivity improvements"
-- *Nico Brandt, Service Center Manager, PinkRoccade, The Netherlands*

Borland®